

JAMES COHAN GALLERY

FOR IMMEDIATE RELEASE



YUN-FEI JI *Water Rising*, detail, 2006, mineral pigments and ink on mulberry paper, 22 1/2 X 450 inches

James Cohan Gallery at ShContemporary 07

The James Cohan Gallery is pleased to announce our participation in **ShContemporary 07**, the Asia Pacific contemporary art fair taking place in Shanghai, China from **September 6 – 9, 2007**. The inauguration of this new international art fair aims to cultivate exchange between the Eastern and Western art worlds and will be a venue where galleries, collectors and art professionals from all over the world will meet. Organized by former Art Basel director, Lorenzo Rudolf and Swiss art dealer Pierre Huber, **ShContemporary 07** is dedicated to creating an important platform for contemporary art that is faithful to Shanghai's international character. The fair will be held in the historic Shanghai Exhibition Center - a gift in the 1940s to Mao from Stalin - which is located in the center of the city near the Shanghai Art Museum.

James Cohan Gallery will be featuring works by a wide range of international artists represented including **Yun-Fei Ji**, **Nam June Paik**, **Roxy Paine**, **Yinka Shonibare, MBE**, and **Bill Viola**, among others. Most notably, the gallery will be showing works by expatriate Chinese painter **Yun-Fei Ji**, marking the first time his work will be shown in his homeland. Included will be Ji's epic scroll painting, *Water Rising* (2006). Video pioneer **Nam June Paik** will be represented by one of his robot sculptures, *From Neander Valley to Silicon Valley* (1994). Also included are two of **Bill Viola's** video works: *Becoming Light* (2005), a plasma screen work depicting a lovers' underwater embrace, and *Poem A* (2005), an elegiac video triptych. British-Nigerian artist **Yinka Shonibare, MBE** is well known for the exploration of the history of colonization. Shonibare's sculpture *Eleanor Hewitt* (2005) portrays one of the sisters who were the founders of New York's Cooper-Hewitt National Design Museum. The Hewitt sisters traveled around the world bringing works together for the museum, including objects that date as far back as China's Han Dynasty. The sculpture represents an interesting historical precedent of globalism from the late 19th century. Additionally, we will feature several works by American sculptor, **Roxy Paine**, including the 2003 scale model for *Defunct*, a 50-foot stainless steel tree which is currently

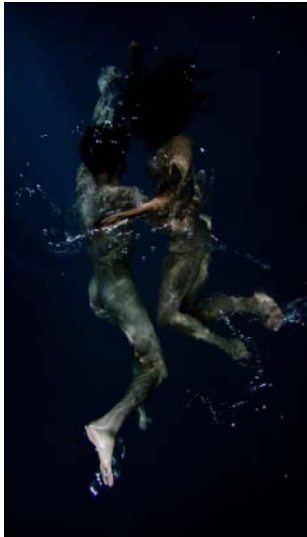
JAMES COHAN GALLERY

on view in New York's Madison Square Park. Paine's sculpture is a poetic monument to loss and life, describing the symbiosis between industry and earth, between production and natural selection.

Other American galleries participating in the fair include: Bose Pacia, CRG, Thomas Erben, I-20, Max Lang, Marlborough, Malca Fine Art, Neuhoff, Max Protetch, Jack Tilton and Walsh. International galleries with spaces in NY that will be participating are: Arndt & Partner, Bodhi Art, Yvon Lambert.

James Cohan Gallery will be located at booth number W2-16. Fair hours are 10 am – 6 pm, September 6 – 9, 2007. For further information about the gallery, please contact Jessica Lin Cox jcox@jamescohan.com or Arthur Solway asolway@jamescohan.com.

For further information about the ShContemporary fair please see www.shcontemporary.info. To arrange an interview with the director Lorenzo Rudolf please contact press officer, Natalia Hnatiuk nataliahnatiuk@yahoo.com or (954)608-6299.



Bill Viola
Becoming Light, 2005
color video on a plasma display
mounted vertically on wall
Edition 10/12
47 ½ x 28 ½ x 3 ¾ inches



Nam June Paik
From Neander Valley to Silicon Valley, 1994
mixed media
112 x 92 x 34 inches



Yinka Shonibare, MBE
Wanderer, 2006
wood, plexiglas, fabric, brass
Edition 8/8
67 ¾ x 48 x 17 ¼ inches



Roxy Paine
detail of *Defunct*, 2004
stainless steel
Approx. 47' high